

The supportive welfare services for child & youth in Taiwan

Report by : Professor Pong, Su-Hwa

**Dean, College of Human Ecology, Shih Chien University
Committee member , The Child and Youth Welfare
Consultative Committee , Ministry of Health and
Welfare**

April 12, 2018



Location: East Asia
Area: Almost 36,000 km²

Population: Almost 23,570,000
% of under 20 : 19%



outline

I. Background

**II. Development of welfare and rights
for child & youth**

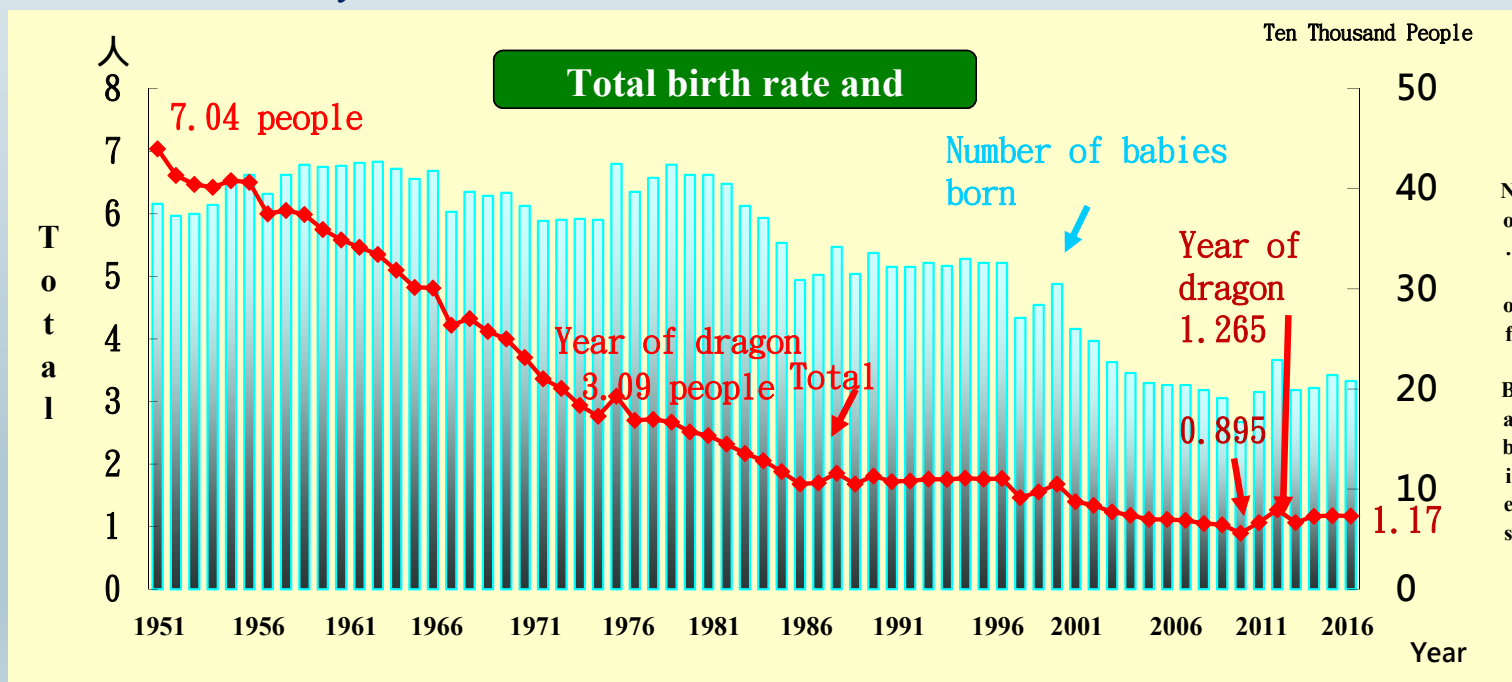
**III. Supportive welfare services for
child & youth**

IV. Challenges

I. Background

Declining Birth Rate

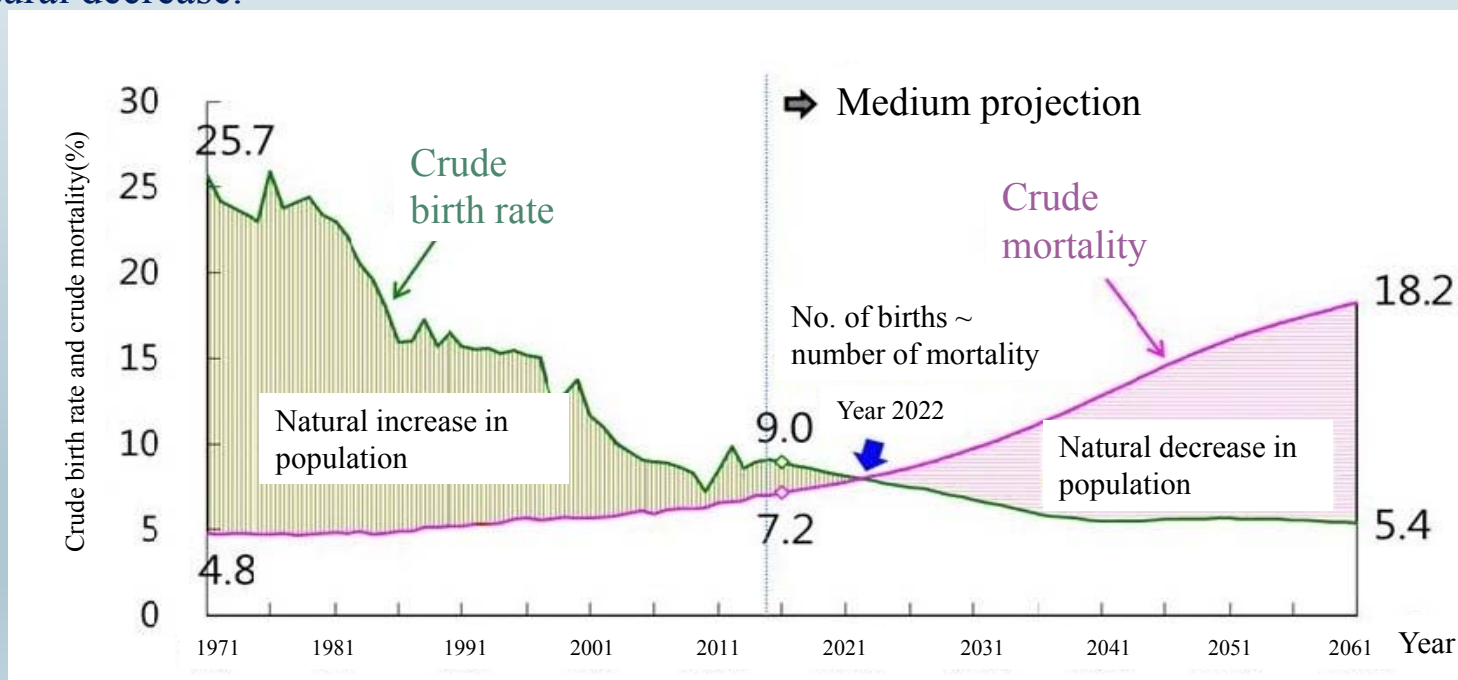
The increasingly serious low-birth rate problem has led to the declining total birth rate in recent years. In 1984, the birth rate fell to the replacement level of 2.1 people and further down to 1.23 people in 2003, which drew Taiwan into the threshold of “super low birth rate countries.” In 2010, the birth rate was down to 0.895 people. Although the total birth rate for 2012 climbed to 1.3 people due to the “Effect of Dragon Year,” the fad for birth eventually declined after that.



Source: Department of Household Registration, Ministry of Interior

Declining Population

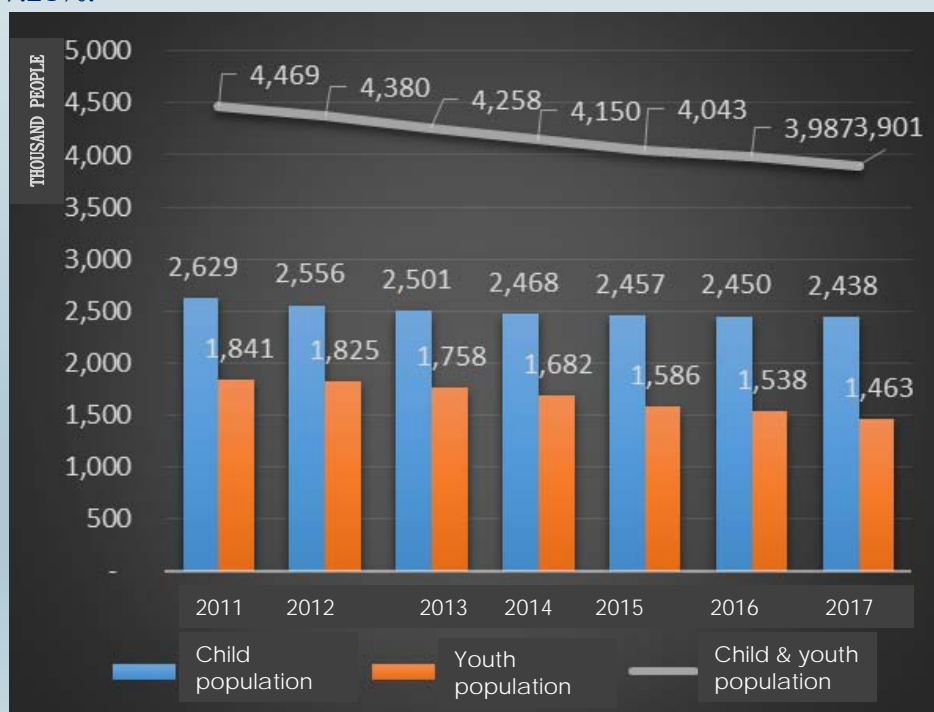
It is projected from the birth rate and mortality released by the National Development Council that, excluding factors of international net migration, the curves for Taiwan's crude birth rate and crude mortality will cross in 2022 while the population will turn from natural increase to natural decrease.



Source: "Republic of China Population Projections Report (2014-2061)" from National Development Council

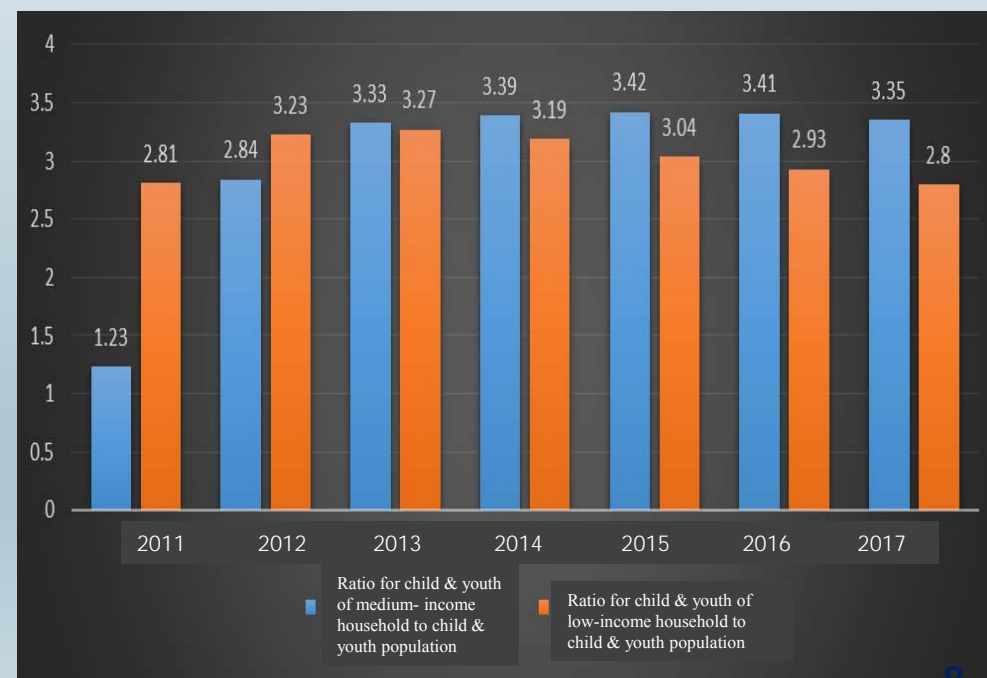
Annually declining child & youth population

The child & youth population of Taiwan declines annually due to the influence of low birth rate, from 4,469,350 people in 2011 to 3,987,202 people in 2016. The total population rate also drops from 19.24% to 17.21%.



Child & youth of low/medium income household ratio to child & youth population

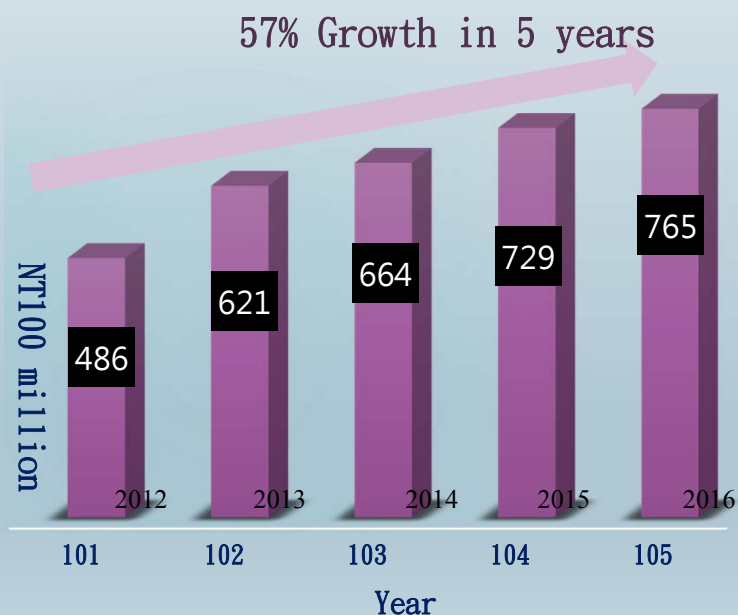
The population ratio for child & youth of low/medium income has slightly increased from 3.39% in 2015 to 3.41% in 2016. The population rate for child & youth of low/medium income household declines annually, diminishing from 3.19% in 2014 to 2.93% in 2016.



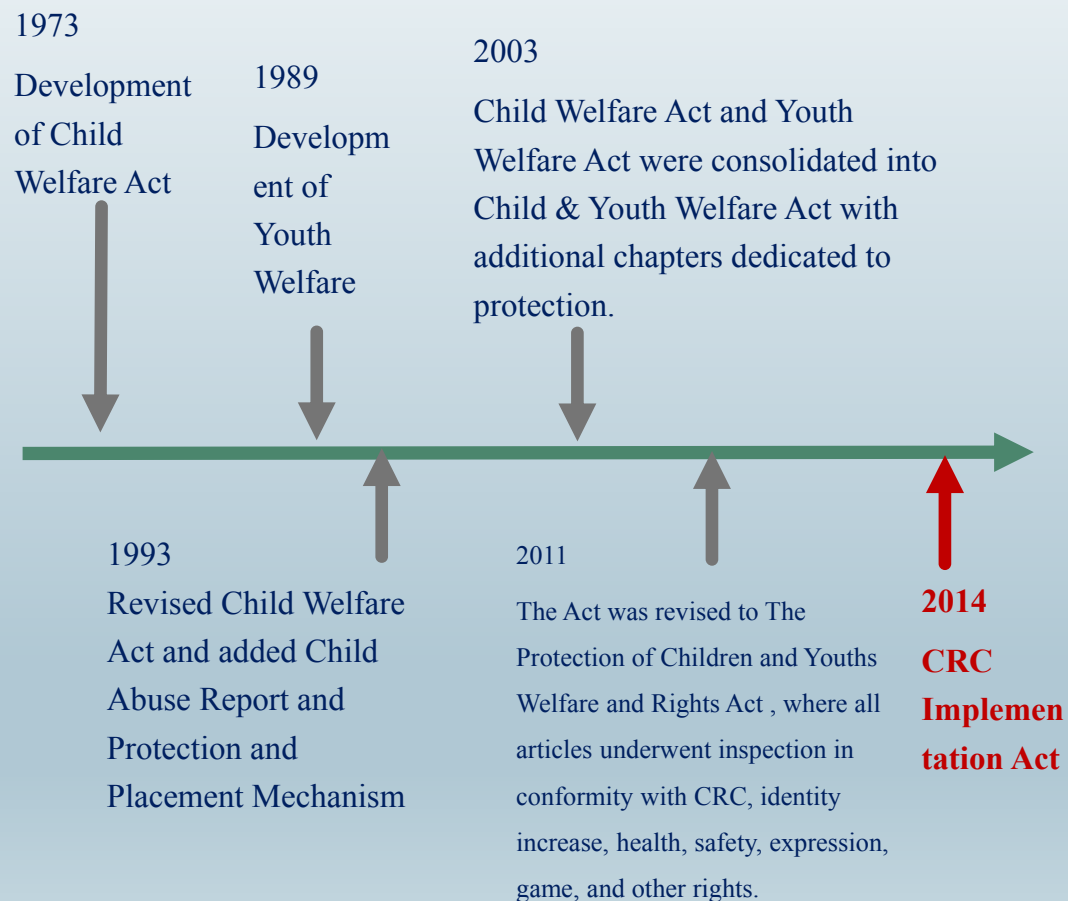
II. Development of welfare and rights of child & youth

Child & Youth Budget

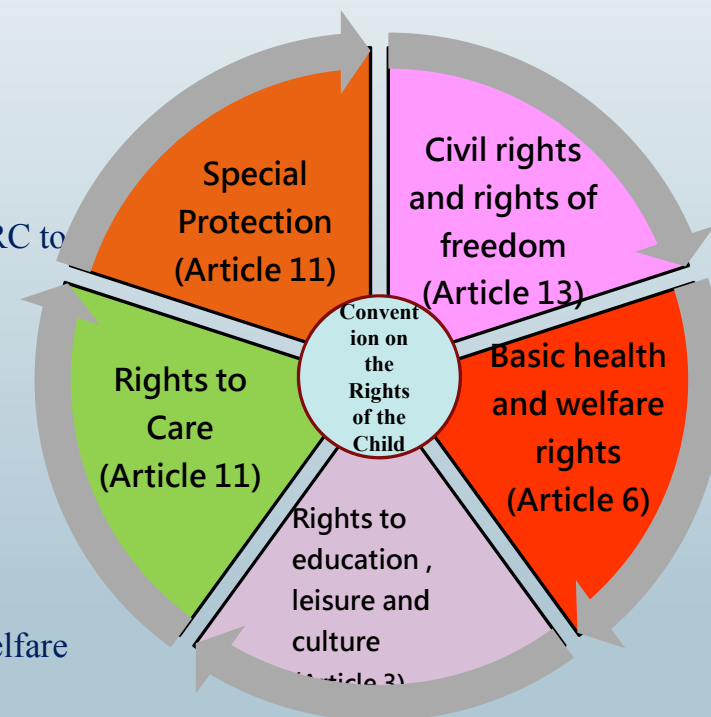
The central government increase child & youth budget annually, from the NT48,600 million in 2012 to NT76,500 million in 2016.



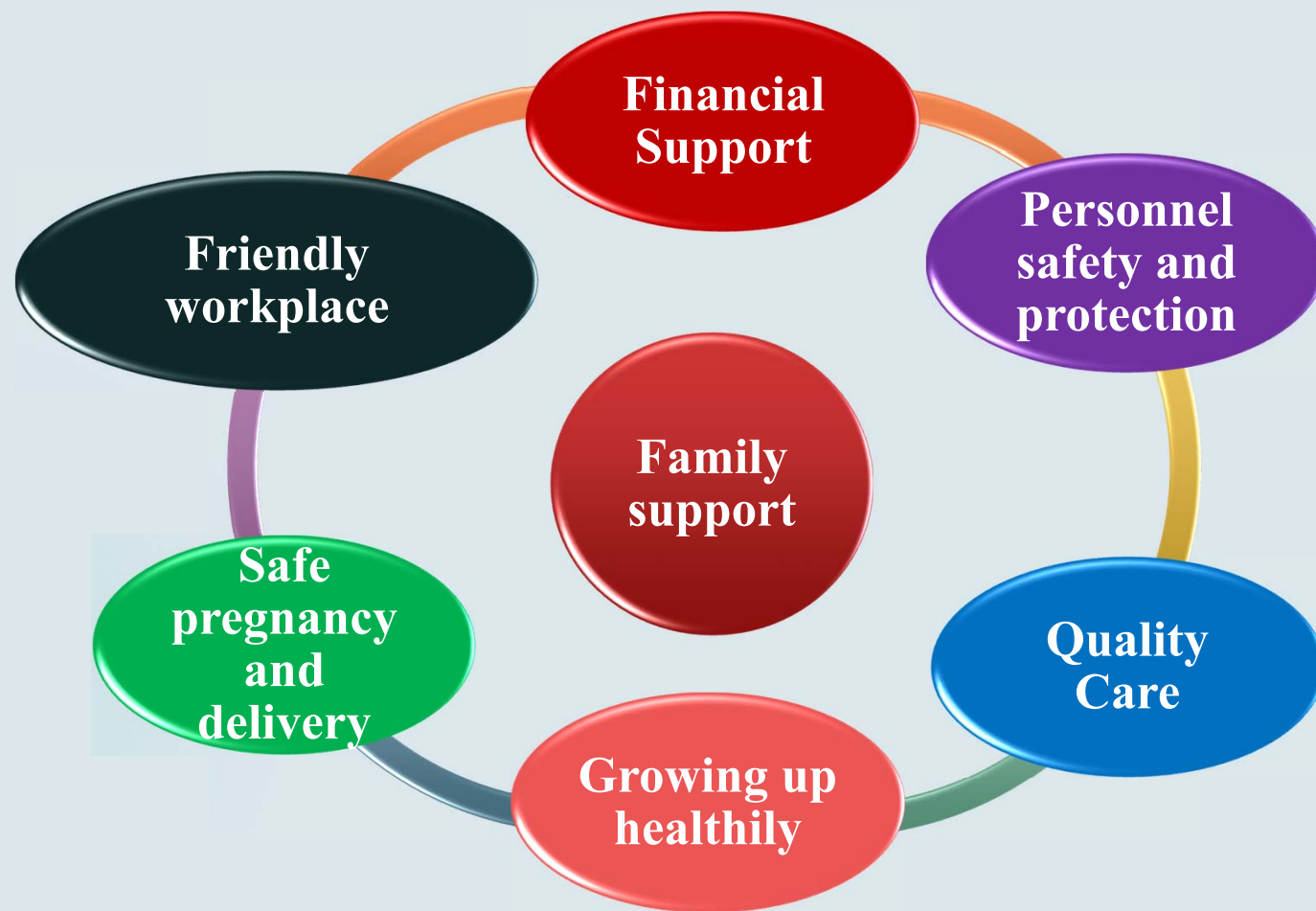
Evolution of Regulations For Child and Youth Welfare



Promote Convention on the Rights of the Child and Progression towards International Connection



III. Supportive welfare services for child & youth





衛生福利部

社會及家庭署

Social and Family Affairs Administration
Ministry of Health and Welfare

children & youth welfare

本部
主管

非本部
主管

Child-raising Allowance for Parents without Employment (0-2 years old)

Emergency Living Support for Disadvantaged Child & Youth (0-18 years old)

Children living allowance of families in hardship (0-15 years old)

Assistance for the Early Intervention and Transportation Fees of Children with Developmental Delay (0-6 years old)

Child-care Subsidy for Employed Parents with Qualified Childcare Providers(0-2 years old)

Living Support for Disadvantaged Child and Youth (0-18 years old)

Medical assistance for children aged under 3 years old (0-3 years)

Assistance for national health insurance of child & youth of low/medium income household (0-18 years old)

Housing Rental (Purchase) Evaluation Weights

Assistance for Child Attending Kindergarten (2- less than 5 years old)

Pre-School Child Tax Deduction (0-5 years old)

5-year Child Tuition Exemption Education Program (5 years old)

12-Year National Compulsory Education (6-18 years old)

Allowance for parental leave without pay (0-3 years old)

Flexible working hours (0-3 years old)

Family care leave (0-12 years old)

Breastfeeding room and care facilities



Child & youth protection report and rescue (0-18 years old)

Child & youth protection parental education (0-18 years old)

Family welfare service center (0-18 years old)

Services for children & youth in families at high-risk(0-18 years old)

Medical services for women in maternity

Health management for high-risk pregnant women

Prenatal Examination and other birth care services

Promotion of psychological health of pregnant women

Medical services for children

Child prevention health and vaccination services

Pediatric emergency medical services

Follow-up and care services for premature infants with excrement low weight at birth

Public-privately collaborative infant centers(0-2 years old)

Resource Centers for Childcare(0-3 years old)

Home care services (0-12 years old)

Non-profit kindergarten (2-6 years old)

Personal & family Care (1)

Child-raising Allowance for Parents without Employment

- At least one parent is unemployed and stays at home to take care of infant under 2 years old. For families with income tax bracket falling under 20%, each family will be subsidized with NT2,500 while medium-income households subsidized with NT4,000 monthly and low-income households subsidized with NT5,000 monthly.

Child-care Subsidy for Employed Parents with Qualified Childcare Providers

- For families with two parents working or single-parent family with father or mother working that send children under 2 years old to family childcare provider or infant centers, families with income tax bracket falling below 20% will be subsidized with NT2,000~NT3,000 monthly, medium-income households will be subsidized with NT3,000~4,000 monthly and low-income household and disadvantaged families will be subsidized with NT4,000~5,000.

Personal & family Care (2)

Emergency Living Support for Disadvantaged Children & Youth

- Children & youth of low/medium income households encountering difficulty, child & youth encountering difficulty due to pregnancy or birth, and child & children of the mentioned children, shall be subsidized with approximately NT1,969 ~2,384 per person per month.

Emergency Living Support for Disadvantaged Children & Youth

- In case one of the parents is unemployed, ruled to sentence in prison, suffering from severe injury or disease, or undergoing alcohol/drug addiction rehabilitation as well as other emergency or special matters that lead to difficulty in life, the social workers will evaluate the **children** and youth requiring assistance to subsidize each person with NT3,000 per month.

Children living allowance of families in hardship

- Children or grandchildren aged under 15 years old shall be subsidized with 1/10 of the minimum wage per person monthly, in the amount of NT2,001.

Medical Assistance

Medical assistance for children aged under 3 years

- Assistance will be given to the co-payment of outpatient and hospitalization for children aged under 3 years old seeking medical treatment.

Assistance for the National Health Insurance of Child & Youth of Low and Medium Income Household

- Child & youth aged under 18 years old from low/medium income households shall be fully subsidized for the self-paid health insurance premium monthly.

Assistance for the Early Intervention Expenses of Children with Developmental Delay

- Preschool children suspected of developmental delay and children with developmental delay or physical and mental disabilities.
- Each child of low-income household will be subsidized up to NT5,000 monthly and each child of non-low income household will be subsidized up to NT3,000 monthly as a rule.

IV. Challenges

Family Support

▶ **A child-centered family policy**

- ▶ 'The best interests of the child'—core value
- ▶ Children are not the property of the parents, they are protected by the public
- ▶ Family should be included into the service system
- ▶ Children have the rights based on the CRC

Family Support

► **Family support program**

- Provide services to families with children in need
- Preventive, supportive services are needed to enhance the development of the child
- The holistic care, including prenatal care, is crucial for the development of the child
- To assist children to develop the skills they need according to their age (0-2years, 2-6years, 6-12years, 12-18years)
- If the children have problems of developmental delay, an early intervention program will be used.
- Professional collaboration—health, welfare, education, labor affair, etc.

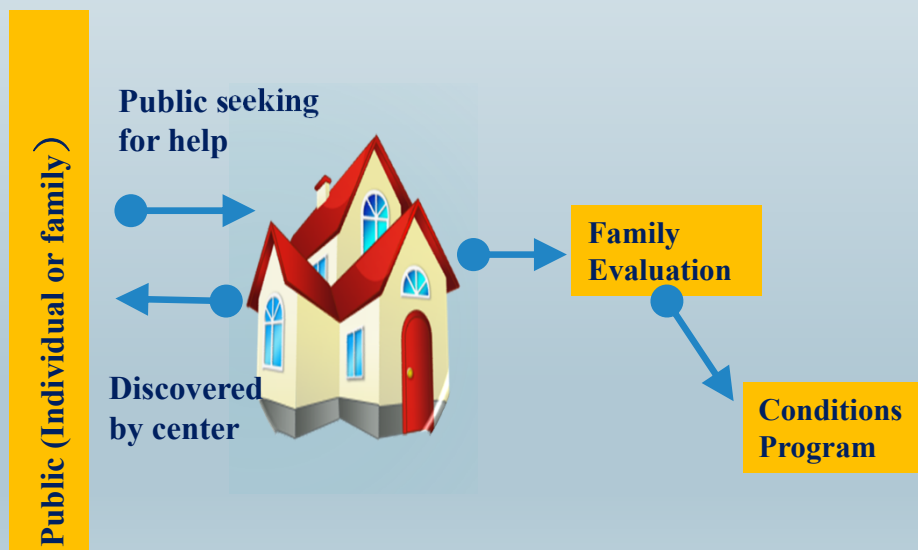
Family Support

- ▶ **Some new programs are emphasized.**
 - ▶ Public-private collaboration infant center (0-2 years old)
 - ▶ Resource center for children(0-3 years old)
 - ▶ Non-profit Kindergarten (2-6 years old)
 - ▶ Children under 6-years-old program
 - ▶ Family welfare service center
 - ▶ High-risk families program

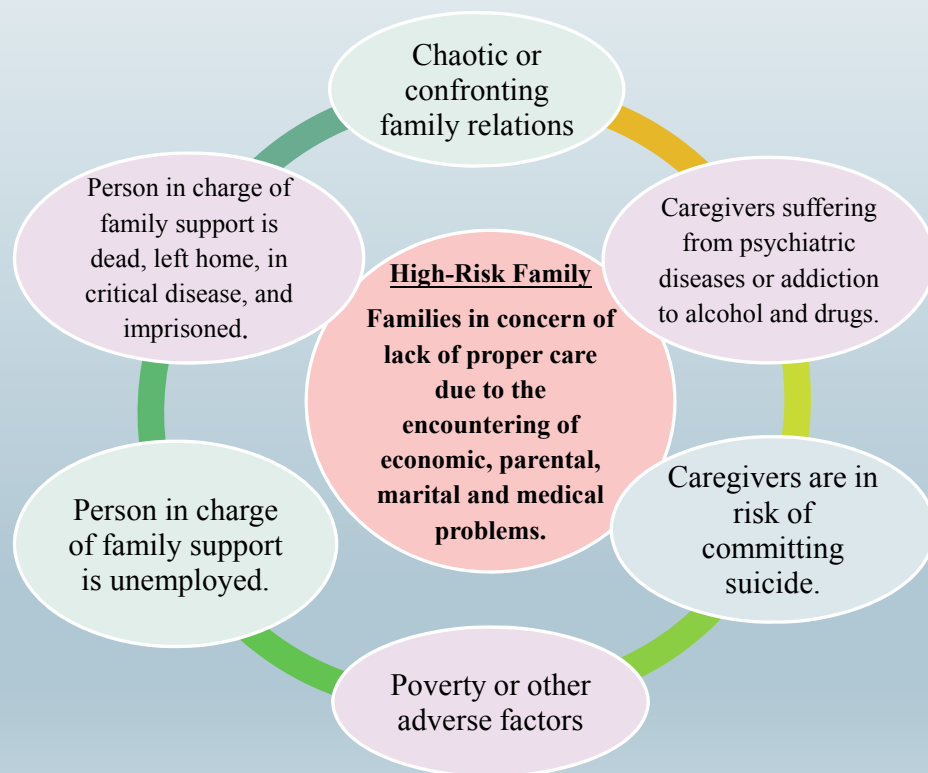
Family Support

Providing family-focused, community-based preventive services to families with need.

Local governments are subsidized for establishment of family centers, including 31 centers in 2016 and 42 centers in 2017. Currently there are 108 family (social welfare) centers in Taiwan and the number is projected to increase to 120 center by the end of 2017.



Providing supportive services to families with potential risk of child abuse



Future challenges

- ▶ Declining birth rate – the crisis of the state
- ▶ Complex personal , family and social issues
- ▶ The quality of child care
- ▶ The limitation of the available resources
- ▶ Professional collaboration is complex.
- ▶ Public-private collaboration is difficult.
- ▶ Vulnerable Families are increasing, family support programs are not always enough.
- ▶ Preventive, supportive services are insufficient.
- ▶ A coordinated '**Social Safety Network Reinforcement Program**' —
2018.2.26

Thank you